

PLOTWORKS FOR WINDOWS



A. GENERAL PARAMETERS

1. Definition

This Technical Bulletin covers the setup and configuration of Windows System Printers in *AutoCAD 2000* for plotting at A&E.

B. PROCEDURE

1. Set the Windows System Printer

Ensure that the appropriate HP DesignJet Systems Printer driver is set as the **default** printer in the System Printers folder before continuing. Refer to *Technical Bulletin CADP-3* for information on Windows System Printers.

2. Configure *AutoCAD 2000*

- a. Start *AutoCAD 2000*.
- b. Type "**CONFIG**" and press **ENTER** at the command prompt. The **Options** dialog box (See Figure 1) should appear. Click on the **Plotting** tab if not already selected.
- c. Click on the **Add or Configure Plotters...** button in the **Default plot settings for new drawings** box. The **Plotters** browser window (See Figure 2) should appear.
- d. Double-click on the **Add-A-Plotter Wizard** icon (See Figure 2). The **Add Plotter - Introduction Page** dialog box (See Figure 3) should appear.
- e. Click on the **Next** button. The **Add Plotter - Begin** dialog box (See Figure 4) should appear.
- f. Click on the **System Printer** selection. Then click on the **Next** button to continue. The **Add Plotter - System Printer** dialog box (See Figure 5) should appear.
- g. Select the plotter best suited for your needs, refer to *Technical Bulletin #CADP-2*.
- h. The **Add Plotter - Import PCP or PC2** dialog box (See Figure 6) should appear.
- i. Since this is a Non-PCP/PC2 user setup, you will not be importing a PCP or PC2 file. Click the **Next** button to continue.
- j. The **Add Plotter - Plotter Name** dialog box (See Figure 7) should appear.
- k. Please change or type-in the Plotter Name:

- | | | |
|---------------------------------------|---|----------------------------------|
| Windows 9x/HP DesignJet 650C (C2859B) | - | A&E CAD PLOTTING |
| Windows NT/HP DesignJet 650C (C2859B) | - | A&E CAD PLOTTING (Color) |
| Windows NT/HP DesignJet 600 E A/O | - | A&E CAD PLOTTING (Black & White) |

Then click on the **Next** button to continue. The **Add Plotter - Finish** dialog box (See Figure 8) should appear. (NOTE: This naming structure is important for future technical-support issues)

- l. You will not need to **Edit the Plotter Configuration** or **Calibrate Plotter**. Click on the **Finish** button to complete the plotter setup. You should be returned to *AutoCAD 2000*'s **Options** menu.

PLOTWORKS FOR WINDOWS

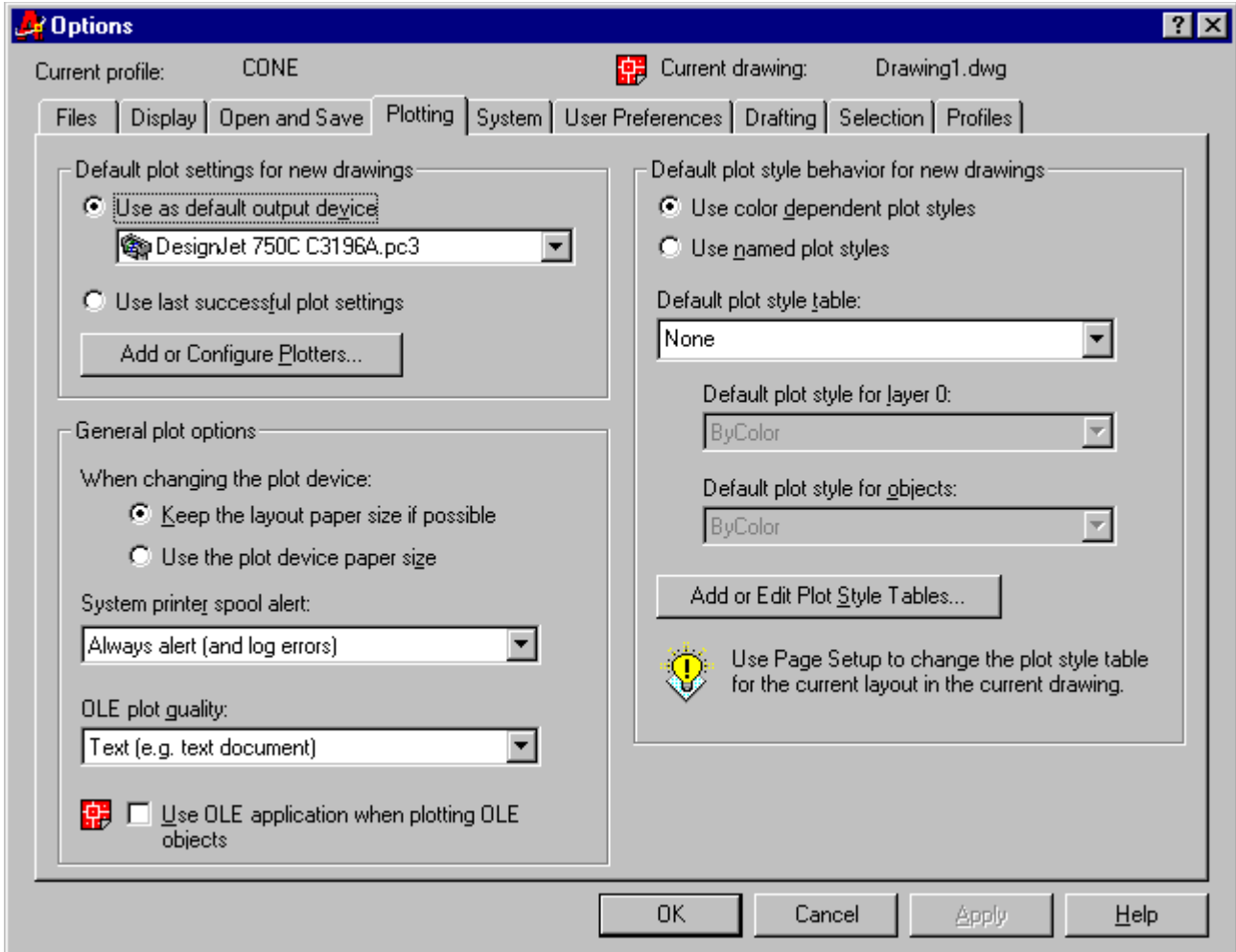


Figure 1

PLOTWORKS FOR WINDOWS

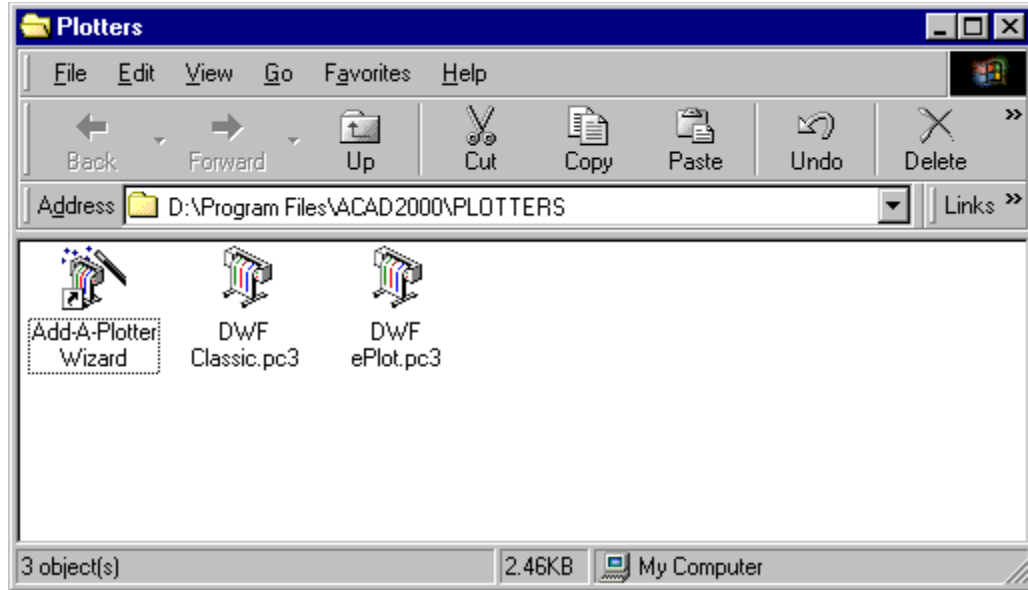


Figure 2

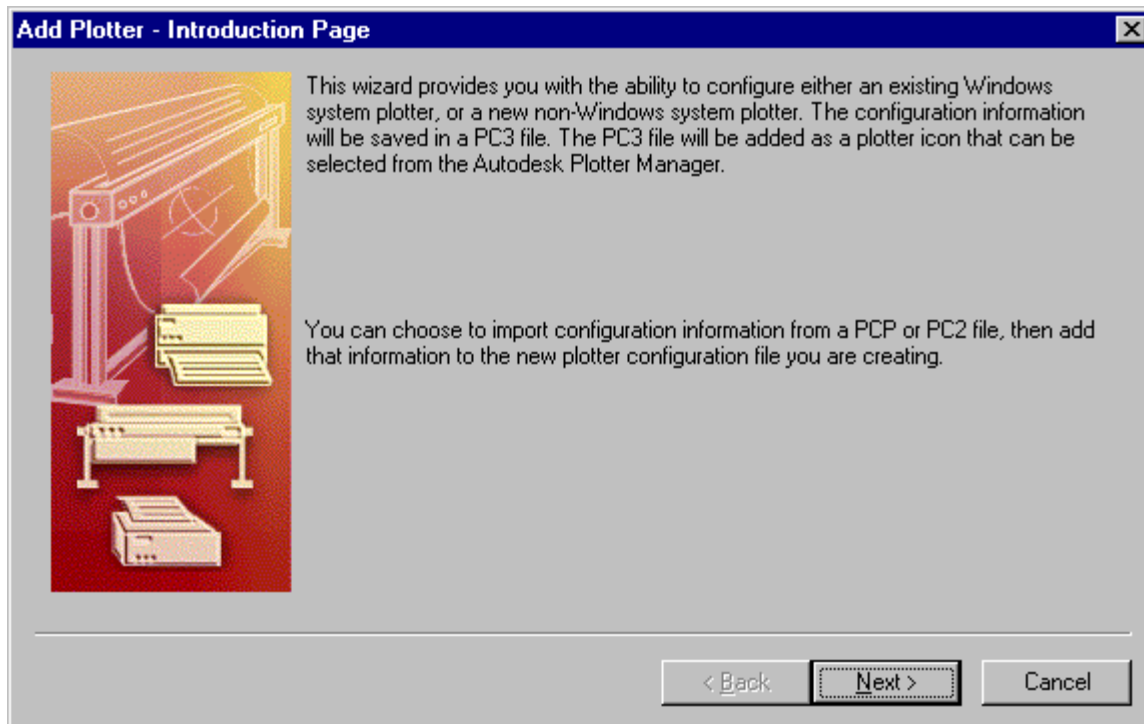


Figure 3

PLOTWORKS FOR WINDOWS

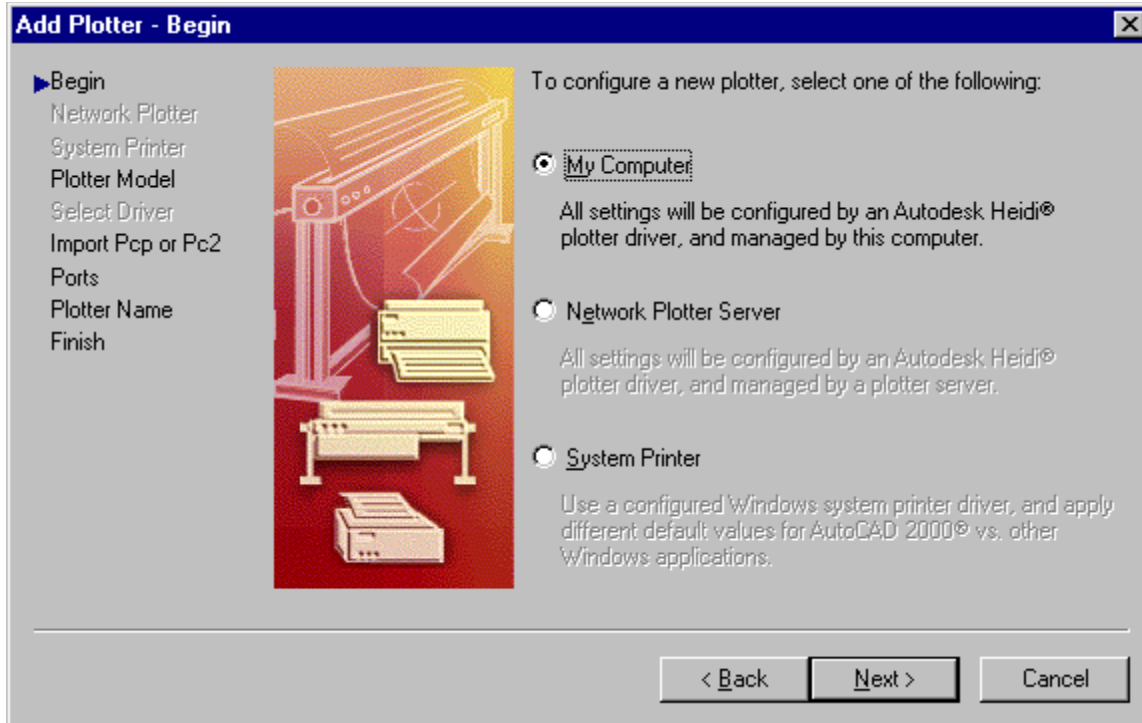


Figure 4

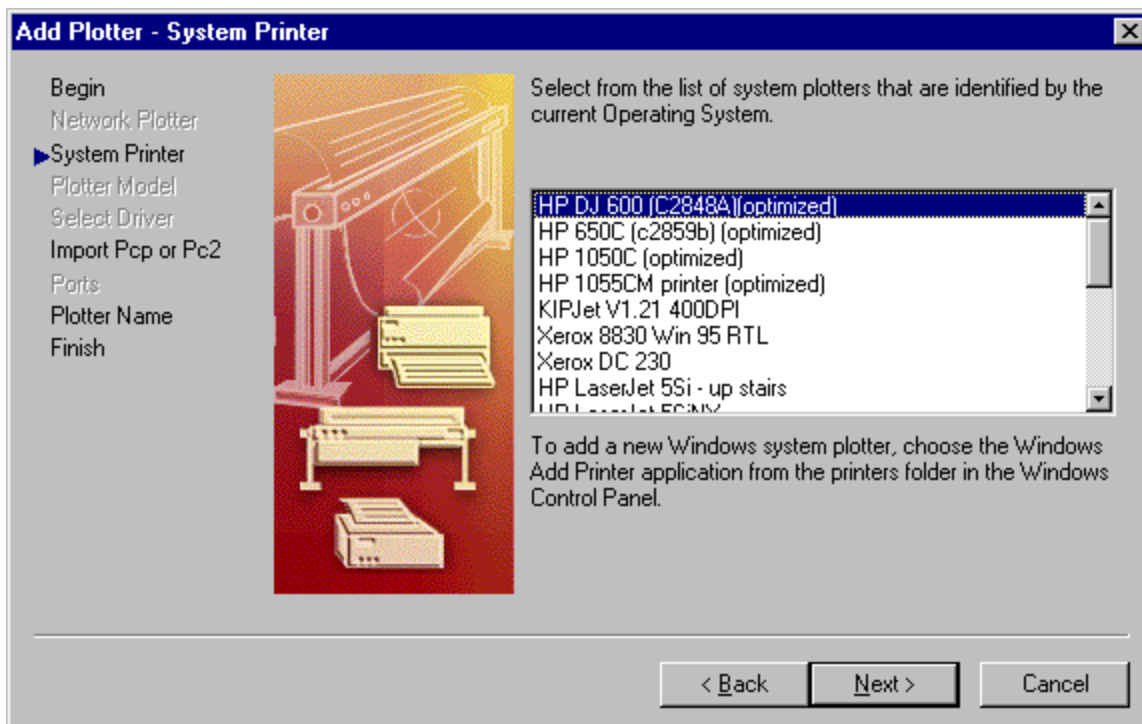


Figure 5

PLOTWORKS FOR WINDOWS

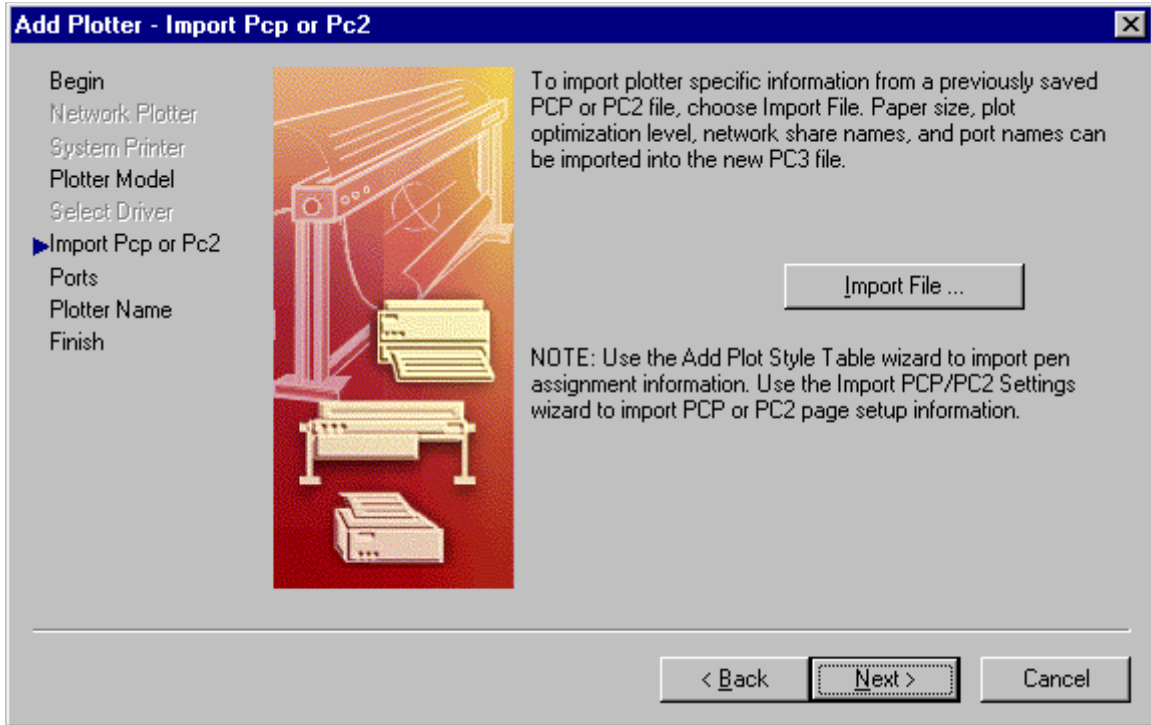


Figure 6

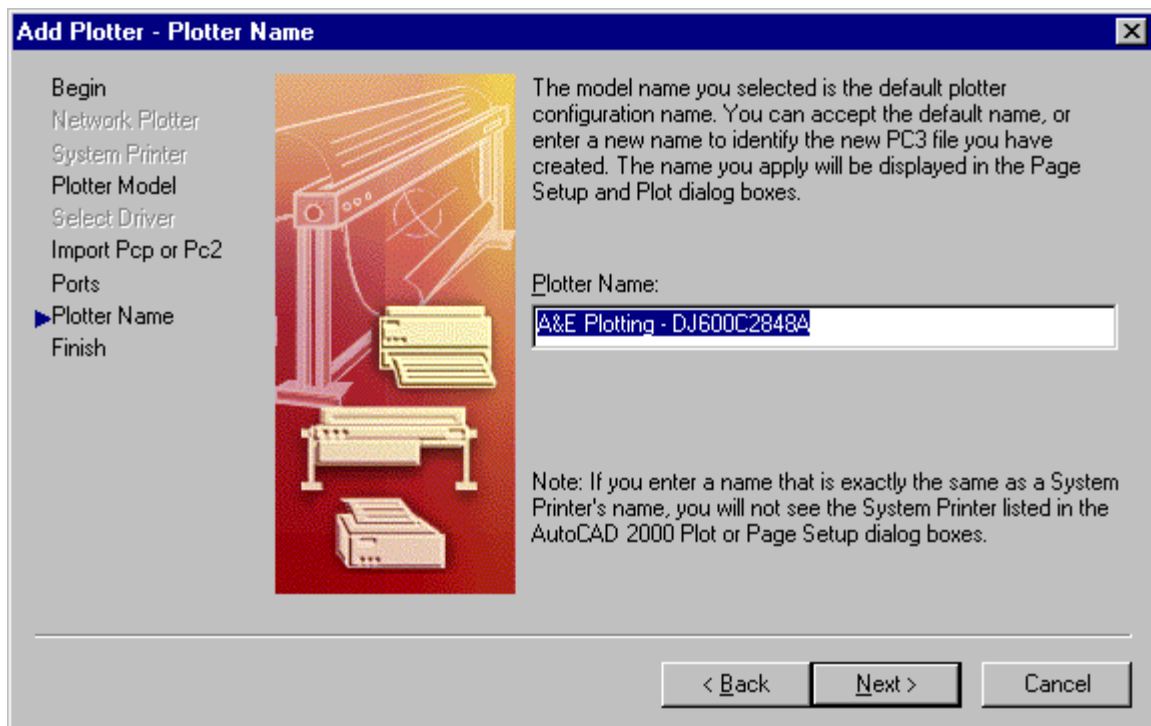


Figure 7

PLOTWORKS FOR WINDOWS

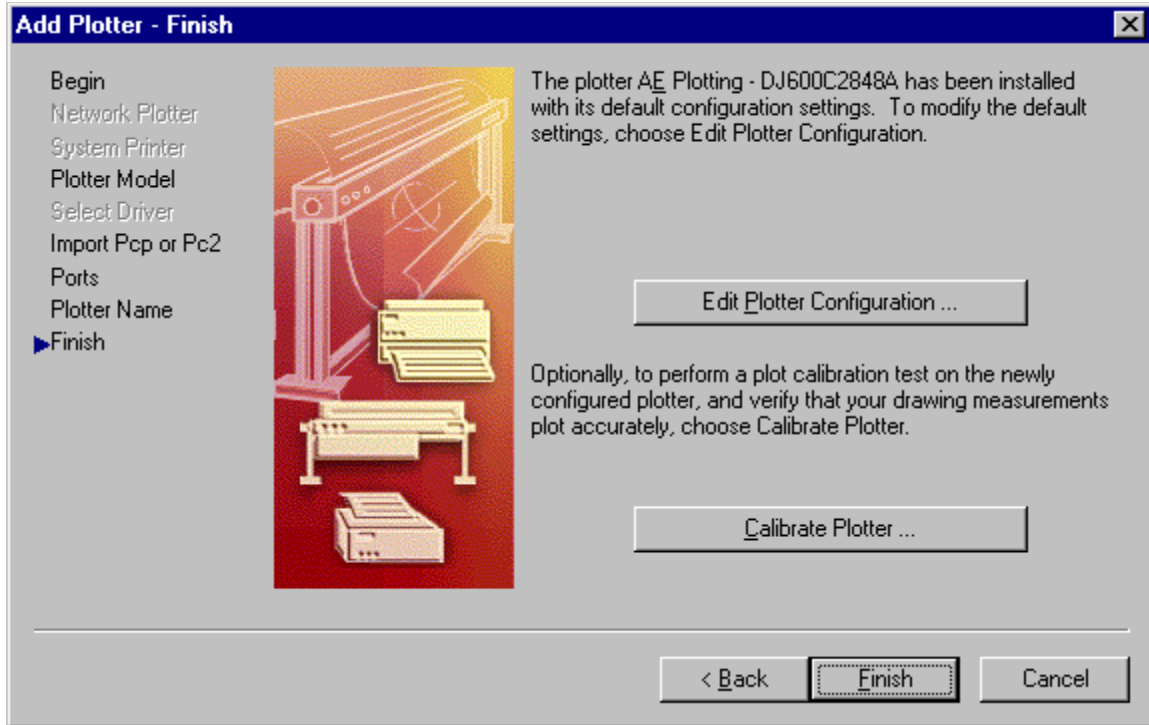


Figure 8